

Introduction:

DOS (Disk Operating System) is an oldest type of Operating System. Disk Operating System is abbreviated as DOS. DOS is a CUI type of Operating System. In computer science, a generic term describing any operating system is system software which is loaded from disk devices when the system is started or rebooted. DOS is a single-tasking, single-user operating system with a command-line interface.

DOS acts on commands. Because DOS is ready to perform when given proper command hence, it is also known as Command Prompt.

Commands are certain words of English language or short form of English words. The meaning of these word or short form is already known to DOS. Since, DOS recognized these words and hence acts accordingly. These words and short forms of the English words are better known as commands.

Internal Command:-Those commands which are already stored in the "Command.Com" file of DOS are known as internal commands. For example, CLS, VOL, TIME, DATE, COPY etc

External Command:-Those commands which are not included in the command.com file of DOS rather included in other files of DOS are known as external commands. It is formatted according to programme. For example, TREE, FORMAT, MODE etc

Some Internal Commands:-

1. **CLS** To clear the screen.
`\>cls ↵`
2. **DIR** To view the directory and files
`C:\>Dir ↵`
3. **DATE** To View and change the date
`C:\>Date ↵`
 Current date is: 01-01-2008
 Enter new date (mm/dd/yy):21-03-2009 ↵
4. **TIME** To view and change the time.
`C:\>Time ↵`
 The current time is: 06:11:56.45a
 Enter new time:1:15:48.57p ↵
5. **Exit** To exit from DOS screen.
`C:\>Exit`
6. **Cd** To go to the root/main directory
`C:\Computer\Monitor>cd\ ↵`
`C:\>`
7. **Cd** To change the directory.
`C:\>CD φ<Directory Name> ↵`
8. **Cd..** To go one directory back.
`C:\Computer\Monitor>cd.. ↵`
`C:\Computer>`
9. **Cd...** To go two directory back.
`C:\Computer\Monitor>cd... ↵`
`C:\>`

10. **Md** To make a new directory
C:\> MD φ <Directory Name> ↵
11. **Rd** To remove any existing directory
C:\>RD φ <Directory Name> ↵
12. **Copy Con** To create a file.
C:\>COPY φ CON φ <FILE NAME> ↵
13. **COPY** To copy the file.
C:\>Copyφ <File Name>φ <New File Name> ↵
14. **Del** To delete a file
C:\>DEL φ <File Name>
15. **Ren** To rename the file
C:\>REN φ <OLD FILE NAME> φ <NEW FILE NAME> ↵
16. **Ver** To check the version of DOS
C:\>VER↵
17. **Type** To display the contents.
C:\>TYPE φ <File Name> ↵
18. **Vol** To check DOS volume.
C:\>Vol ↵
19. **Label** To apply label to any drive.
C:\> Label <Name> ↵
20. **Attrib** To change the attribute of a directory or a file.
c:\>Attribφ <File Name>φ+h/-hφ+s/-sφ+r/-r ↵
21. **Color** To change the colour of background and font of DOS screen
c:\>color <any digit from 0 to 9 or ABCDEF>

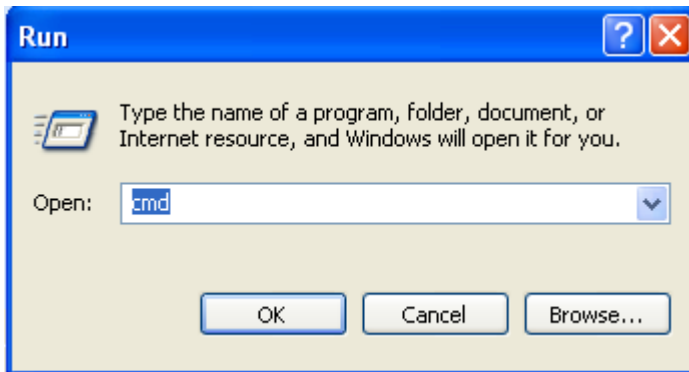
Some External Commands:-

1. **FORMAT** To format any Drive.
C:\>FORMAT φ <DRIVE> ↵
2. **TREE** To view directory & Sub directory
C:\>Treeφ <Directory Name> ↵
3. **CHKDSK** To Check disk or drive
C:\>Chkdsk ↵
4. **MOVE** To move any file to any location.
C:\>Move<source File Name>φ <Destination> ↵
5. **Edit** To edit or modify the contents of the text file.
C:\> EDIT φ <File Name> ↵

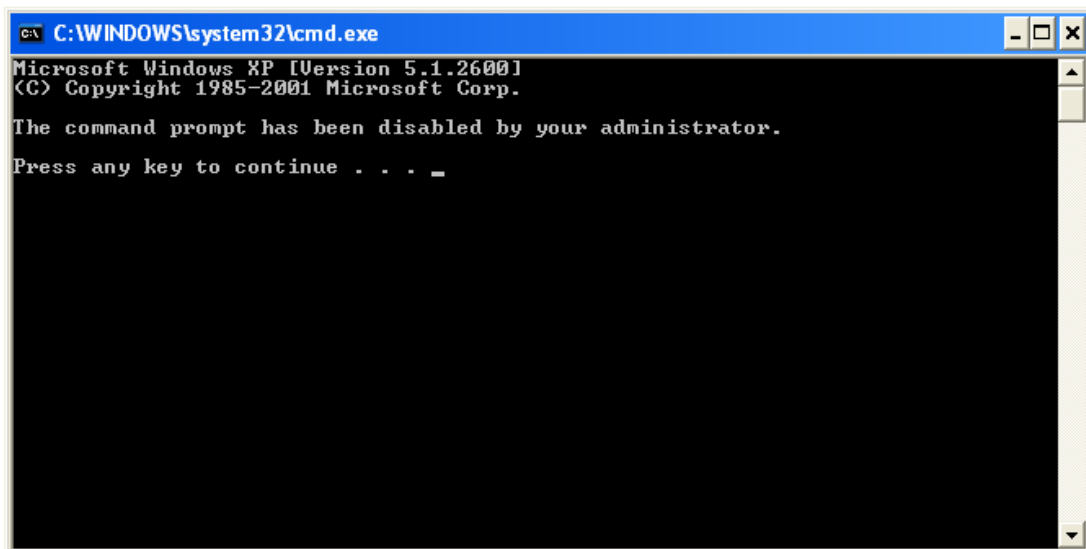
If we have installed WINDOWS as our main Operating System then we get a DOS environment within WINDOWS. MS DOS (Microsoft DOS) environment can be run on computer through WINDOWS in following way:

Click on start button and in the list produced click on "RUN" option. A dialog box appears. In this dialog box, type cmd or command in the given box next to label "Open". Press enter or click on OK button. DOS will open on your computer screen.

Start → RUN



RUN dialog box.



DOS Screen